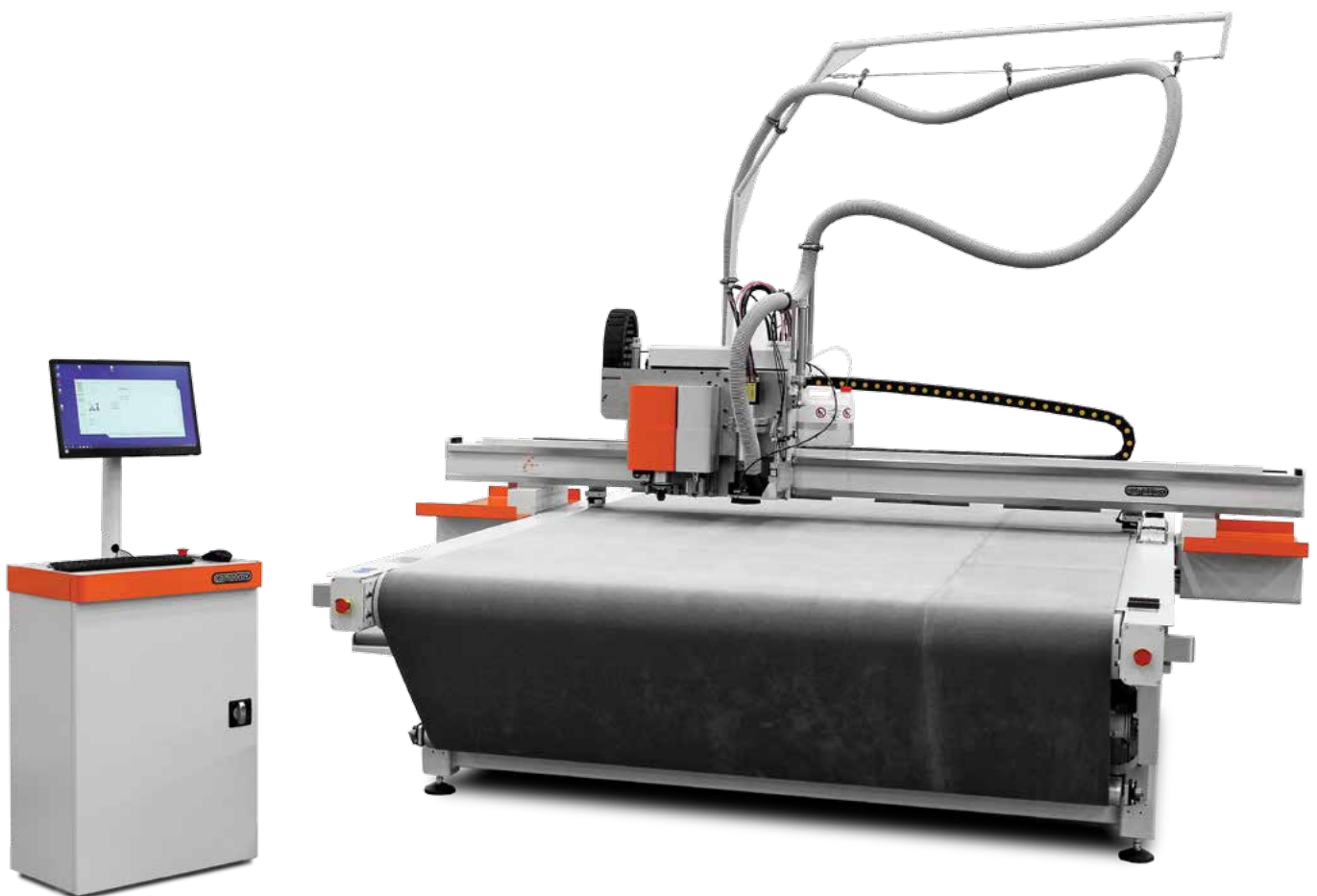




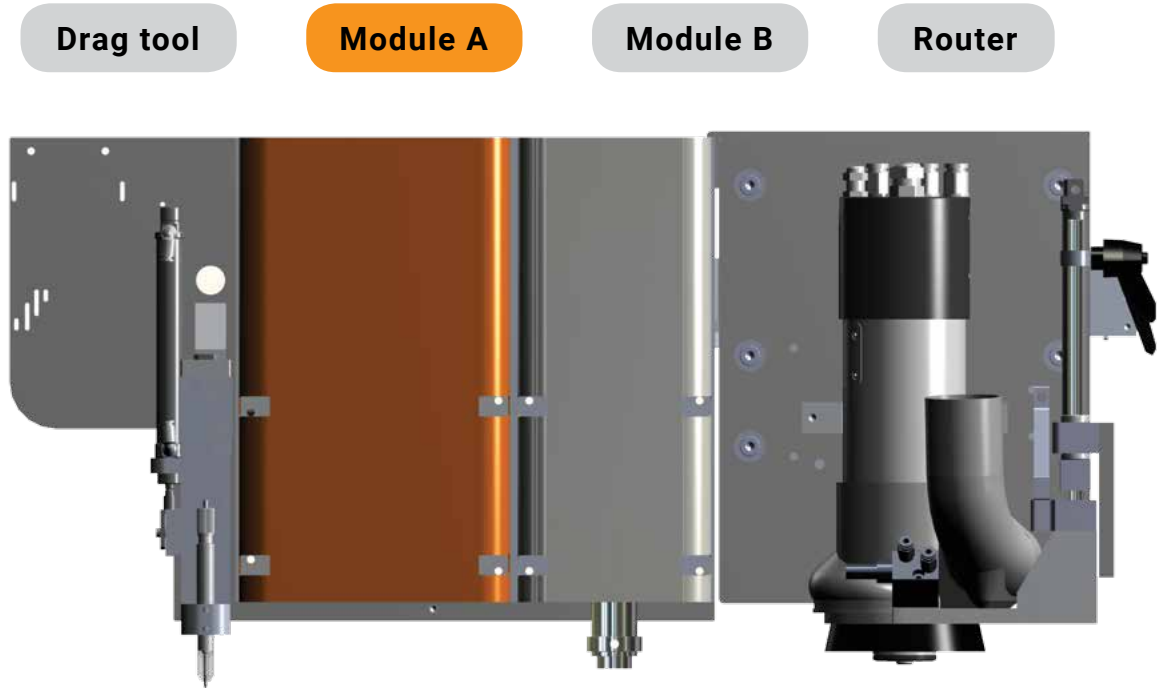
# Powerful cutting table **DIGI CORSA 2034**



for signage • industry • packaging & design

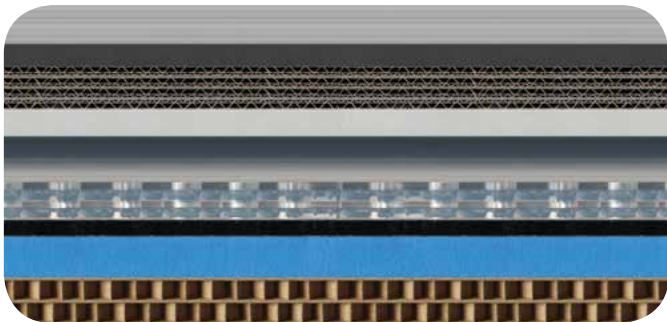
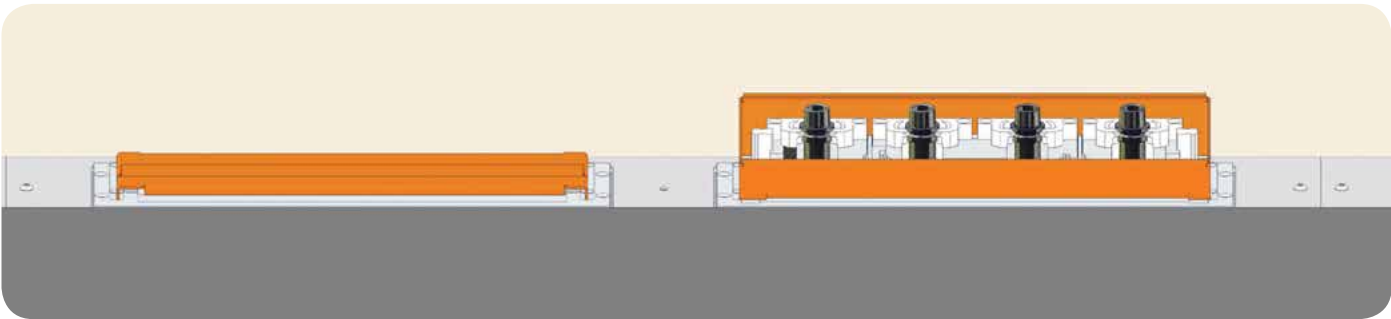


# Multifunctional head with advanced versatility



	Drag tool	Module A	Module B	Router
Pneumatic oscillating knife		●		
Electric oscillating knife		●		
U1 universal tool		●	●	
Motorized cutting disc		●	●	
Pen	●			
Drag knife	●			
ATC spindle 3.6 kW 50.000 RPM				●
ATC spindle 3.6 kW 40.000 RPM				●

## Automatic tool change (ATC) storage for 8 tools with automatic closure for tool protection



### U1 universal tools

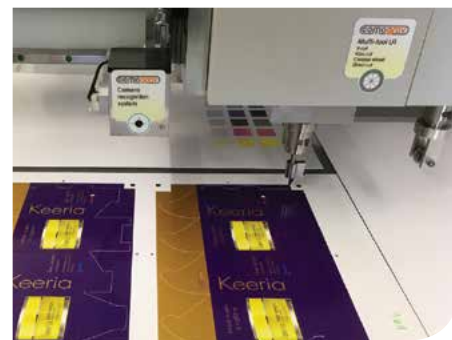
- (Easy-to-plug replaceable tools.)
- Kiss-cut
  - Direct cut (thin knives, HD knives, etc.)
  - V-cut
  - Creasing wheels for corrugated
  - Creasing wheels for cardboards
  - Pen

### Materials

- Plastic (PVC, PE, PP, ABS, ...)
- Plexiglass - Acrylic
- Aluminium
- Di-bond
- Corrugated cardboard
- Cardboard
- Sandwich board
- Vinyl
- Textile and fabric
- Pre-preg
- Banner
- Etc.

# Technology for COMAGRAV DIGI CORSA 2034

- Endless cutting pad for roll cutting (for RC type with conveyor belt)
- Vacuum table with 6 zones
- Oscillating cutting
- Direct cutting
- Routing spindle with 50,000 or 40,000 RPM
- Automatic tool change with 8 positions
- High precision tools HSK E25 with UP precision collets (Ultra Precise)
- Powerful dust collector
- Integrated spray cooling for aluminum cutting
- 3 + 1 multifunction (3 heads + pen or drag knife)
- Camera system compatible with many RIP softwares (Onyx, Flexi, Colorgate, Caldera, Asanti, ...)
- Barcode and QR code support for automatic file loading
- Automatic cutting from rolls
- Automatic sensors to adjust tool height and material thickness
- Presets for tools and materials
- New security system



## New cutting tables for signage, industry, packaging and design.

We bring you an innovative single table solution that can handle all cutting operations. COMAGRAV DIGI CORSA cuts the widest range of materials. Table equipment is tuned with emphasis on quality and cutting speed. Routing with automatic tool change, oscillating and direct cutting, creasing, labeling, etc. Easy operation and compatibility - that's the new DIGI CORSA.

## Industrial large format cutting tables

Built-in spindle for perfect routing. 50.000 revolutions for a perfect, smooth and fast cutting (up to 3x higher feed rate than standard 24.000). Automatic tool change is ideal for high automation operations. In addition, the tray is covered to keep the tools from interfering with material loading and to be in maximum cleanliness.

A very rigid steel frame, along with a robust vacuum table, is a significant asset in securing investment in a high-quality cutting table - decades of life is counted.

With replaceable modules, the possibilities of material processing are almost endless. You can also add modules later - the cutting table will grow with your business. You can safely process new materials and invent new applications.

The main cutting equipment are oscillating and fixed knives – these are easily replaceable for quick and efficient work.

The powerful router head (3.6kW) cuts plexiglass, dibond, aluminum, PVC, ABS, etc. Almost no chips remain on the table with cyclone dust collector. The transition from routing to cutting is a matter of seconds.

The dust collector now includes integrated spray cooling system for aluminium and dibond. That is why cut is perfect and the cutter life is very long.

The motorized cutting wheel effectively cuts sheets, banners and woven and nonwoven fibrous materials.

The camera system is standard equipment for DIGI CORSA. This necessary tool for cutting printed media is available at no extra cost. The system finds print marks and cuts the actual print state. The camera system supports print RIP outputs - for right compatibility (Onyx, Flexi, Asanti, Colorgate, EFI Fiery, Caldera, Adobe Illustrator,...).

Reading bar codes and QR codes with an integrated camera to automatically load a file for cutting is a new feature that replaces expensive third-party systems. It is also useful when cutting printed media from a roll that is being cut automatically.

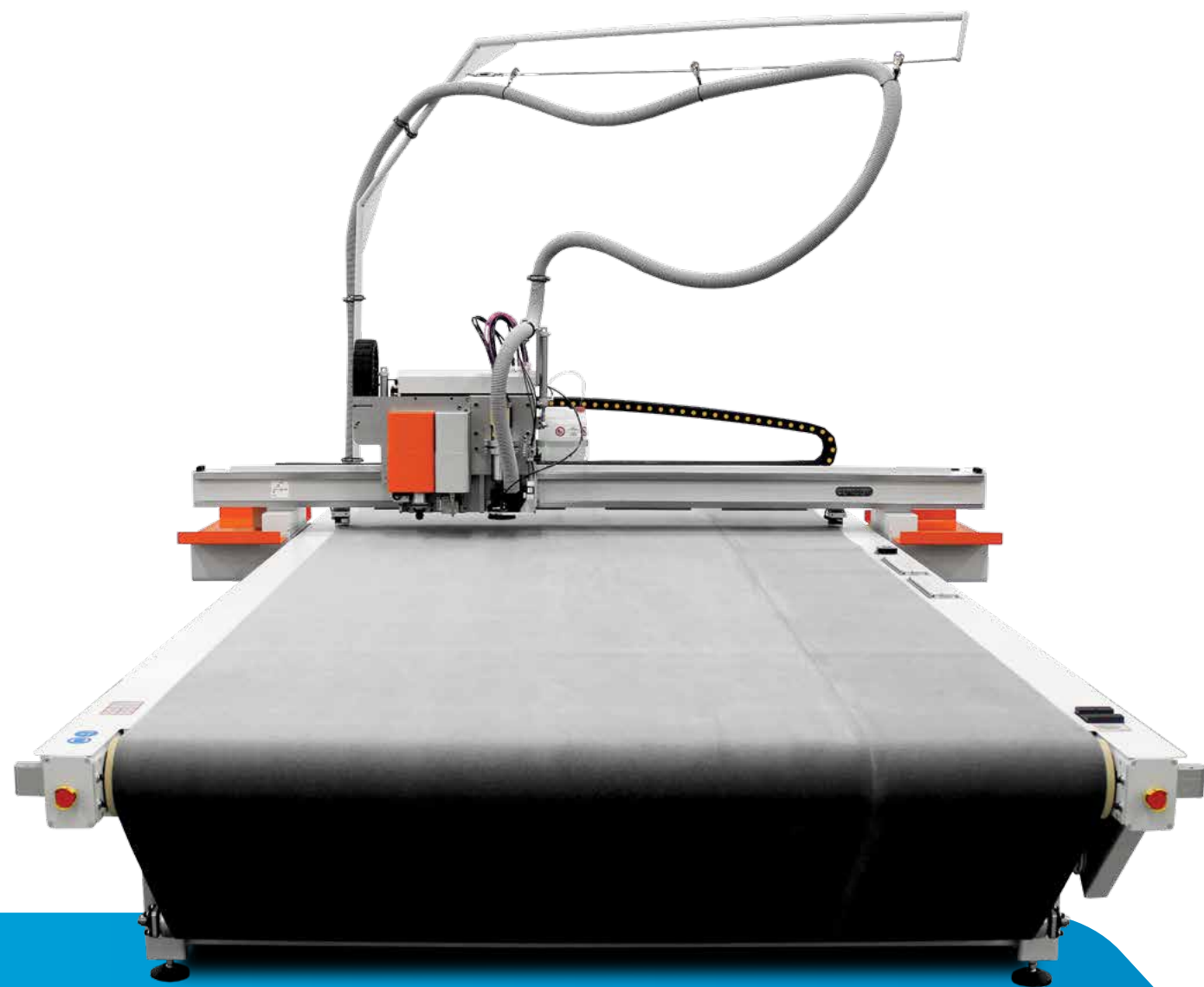


# Cutting edge technology for large format cutting

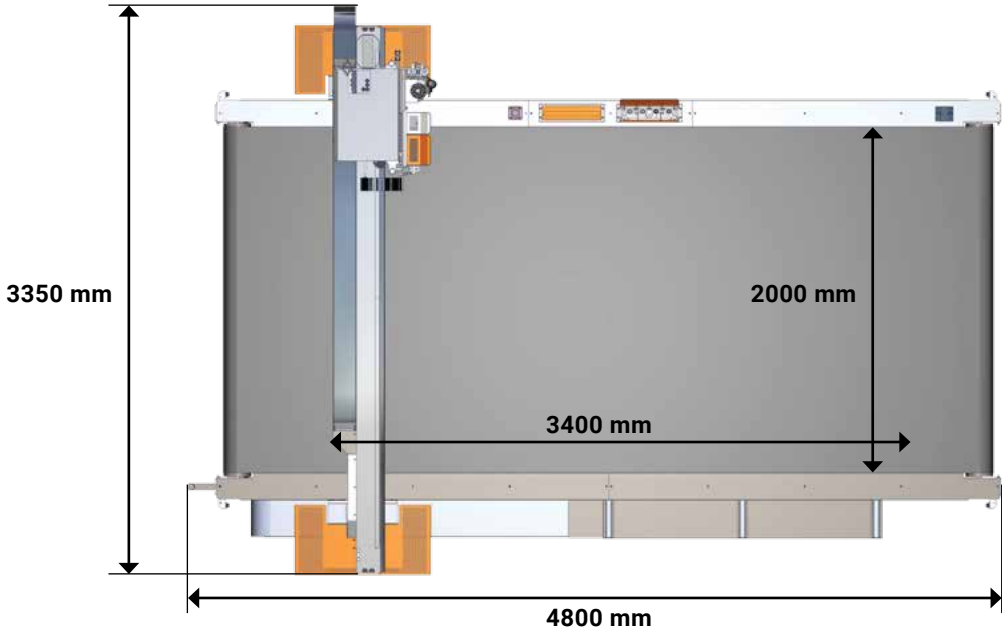
COMAGRAV DIGI CORSA is a new flatbed cutting system for signage, packaging, display and design, sales promotion, industrial cutting and powerful milling.

We have been on the market for 20 years – and such a jubilee deserves a dignified celebration.

We celebrate this jubilee with the introduction of a new range of machines that capitalize on our experience in developing and using cutting systems. High quality and reliable service that European customers simply expect.



## Dimensions and working area



Working area	3400 × 2000 mm
Max. material size	4200 × 2200 mm
Max. material width with conveyor belt	1930 mm
Max. cutting thickness	60 mm
Max. routing thickness	80 mm
Maximum speed	1150 mm/s
Maximum acceleration	5000 mm/s²
Resolution	0.00075 mm
Router power	3.6 kW
Max. router speed	50.000 RPM
Clearance under gantry	80 mm
ATC storage	8 tools
Tooling	HSK E25
Collets	Ultra precise ER-16
Router tool diameter	1 – 10 mm
Spray cooling	Integrated
Vacuum power	5.5 kW
Vacuum zones	6
Overall dimensions	4800 x 3350 mm
Worktable height	785 mm
Weight	2350 kg
Drive system	Mitsubishi AC servo motors
	Planetary gearboxes
	Helical rack and pinion

# Why COMAGRAV?

## Tradition

COMAC is family company founded in 1991. For 20 years we have been supplying machines with COMAGRAV brand.

## Quality and durability

Machines have industrial design with emphasis on robustness and durability. We pay attention on high quality of processing, which customers in Europe rightly expect.

## Research and development

We bring our own ideas to the market, based on the experience we have accumulated. Technological condition are changing rapidly, technologies which were expensive in the past are becoming increasingly available. That's the reason why you get advanced equipment from us.

## Tools

We have decent knowledge in cutting and milling. That's why we do business with tools made in Europe and USA, that you really use in your production.

## Service

What is production facility for, without available service? If you really want to produce, you need a reliable partner to provide you with fast and affordable service. Therefore you can always contact us with confidence.

## Services

We provide phone call support – our clients always get good advice from us.

### Manufacturer:

COMAC spol. s r.o.  
Spojovací 362  
Poříčí nad Sázavou  
Czech Republic

[info@comagrav.com](mailto:info@comagrav.com)  
tel. +420 317 778 022  
[www.comagrav.com](http://www.comagrav.com)