

# Ricoh Flatbed Pro™ TF6250

Brings image quality, productivity and  
versatility to the graphic arts market



Pro™  
TF6250

116  
m<sup>2</sup>/h

full colour

Prints on  
**wood, glass,  
metal** and  
more up to  
**110mm** thick





## **Our compact, fast and flexible solution designed specifically for the sign and graphics sector**

With speeds up to 116m<sup>2</sup>/h, our new Ricoh Pro TF6250 UV flatbed printer lets you tap into the profitable sign and graphics market by producing products fast and efficiently on substrates up to 11cm thick.

Industry-leading productivity and versatility helps you expand your client base with applications for emerging markets. This includes short-run packaging, promotional products, and industrial and interior décor.

Low operating costs, superb image quality and exceptional reliability enable you to go for ambitious growth plans fuelled by high-profit potential.

*Productivity varies depending on ink type and print mode*

# High performance. Highly versatile.

MODE	VARIATIONS
Standard	C, M, Y, K, W, Cl, Pr
Double White	C, M, Y, K, W, W

## Printing speeds up to 116m<sup>2</sup>/h

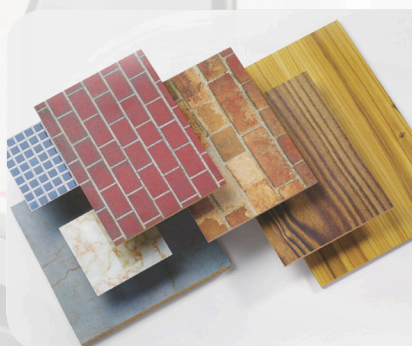
The Ricoh Pro TF6250 has industry-leading print speeds of up to 116m<sup>2</sup>/h in 4C draft mode and 48 m<sup>2</sup>/h in 4C standard mode. The 12 Gen.5 (MH54) series printheads in a three row staggered alignment ensure high productivity and superior image quality ideal for the most demanding production environments.

## Value-added printing

With three different ink sets to choose from you can select the ideal ink type for your application, media and usage needs.

- **RICOH Pro UV Ink T7210**
- **RICOH Pro UV Ink GP120**
- **RICOH Pro UV Ink DG130**

High adhesion ink (Industrial)  
Superior Colour Gamut ink (Graphics)  
Versatile ink for high adhesion and wide Colour Gamut ink



## Practically unlimited application potential

Capable of printing on a wide variety of substrates and rigid media up to 11cm. Ideal for traditional Sign and Graphics applications or expand into emerging markets such as décor, packaging and promotional items.

## Media versatility for greater profitability

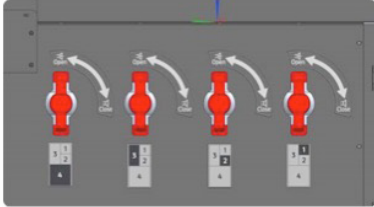
- Maximum image area up to 2,500mm x 1,300mm
- Greenguard certified UV ink with low odour, ideal for indoor application
- Supports media up to 11cm thick
- Ricoh's specially formulated UV LED ink is flexible, has excellent adhesion and is cured instantly ready for immediate finishing and handling

**2,500mm x 1,300mm**

**Up to 11cm media thickness**



# So reliable and easy to use



Vacuum lever switches

## Multi zone vacuum system

4 independent vacuum zones support printing onto irregular, oddly shaped or multiple media pieces, eliminating the need for pre-masking.

## Ioniser function

Ioniser function helps eliminate static, ensuring optimal jetting accuracy. This results in consistent image quality and productivity.

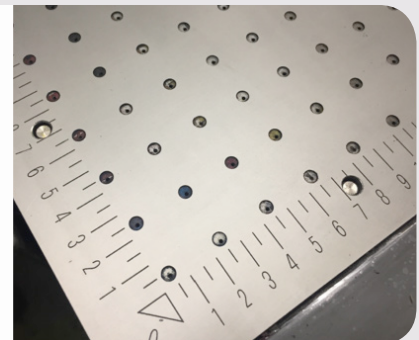


## Front access maximises operator productivity

Located at the front of the system, the Ricoh Pro TF6250 provides operators easy access for managing supply levels of the ink tanks.

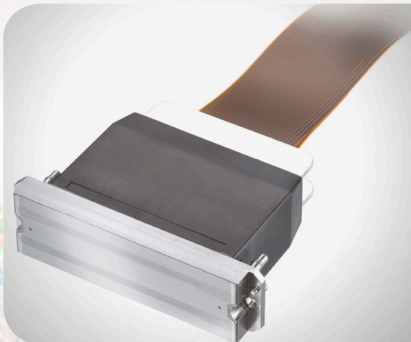
## Media handling capabilities

- The registration pins allow you to accurately position media on the table, ensuring precise registration for double sided printing and accurate image placement
- The automated media height detection feature measures the media height and accurately position the printheads and carriage to the ideal printing position





# Ricoh technology offering high durability

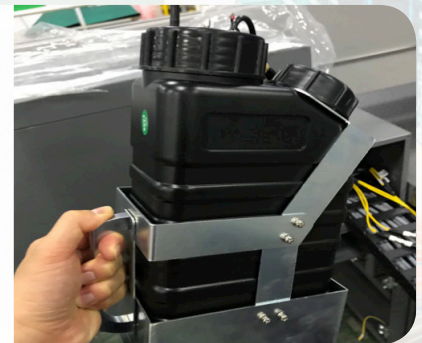


## Highly reliable image quality

Ricoh inkjet print heads are made of stainless steel, designed to deliver day-one quality over years of reliable use. They feature 1,280 nozzles per printhead with a native resolution of 600dpi. The multidrop capability allows for 4 levels of grey scale ensuring precision printing for crisp detail, sharp accurate text, smooth graduations and life-like skin tones.

## Easy and safe maintenance

- The automated cleaning station (or automated maintenance) simplifies daily operator routines to keep the print heads clean
- The crash detection sensor minimises media strikes and protects the printheads
- Ricoh's human sensor protects your operators from harm during the printer's operation



## A cost effective solution

Ricoh's intelligent resource management and streamlined interface technology make short runs and one-off runs simple and cost effective. This helps boost return-on-investment for custom jobs. Whilst the LED lamps not only save energy, but are designed for long life and less downtime.

## Ricoh white ink expands the ability of designers

- Ricoh's white ink gives more eye-catching results and expands your applications range
- Printing white ink as a foundation layer on transparent or colour materials helps retain the natural vividness of colours
- Three layered printing, which prints white ink between colours, shows images on both



# Ricoh Pro TM TF6250.

## Everything you need to succeed.



## Endless printing possibilities

- 1 Capacity for up to 11cm media thickness
- 2 Up to 116m<sup>2</sup>/h high productivity in 4C draft mode
- 3 Integrated vacuum table with pin registration
- 4 Specially designed end guards have sensors for operational safety
- 5 Highly reliable Ricoh print heads
- 6 Energy saving LED lamps
- 7 Newly developed UV ink (Industrial, Sign & Graphics, Versatile)
- 8 Front access to maximise operator productivity

City Guide



# Our expertise and support in action

Like to see the difference our new Ricoh-developed flatbed printer and world leading inkjet technology could make to your business? Then come to the Ricoh Customer Experience Centre either in the UK or Japan.

It's where our Inkjet Technology Centre is based and where our scientists explore how technology can be optimised for a range of industrial applications including fluid compatibility and jetting characteristics, component application compatibility. They also offer expert technical support and guidance.

Here you can get your hands on advice and see live demonstrations of our innovative inkjet head and Piezo technology, the benefits of our UV curing versus the traditional Merco lamp, and much more.

It offers you the remarkable depth of support and care that you would expect from Ricoh - the company that has been at the forefront of inkjet technology innovation for some thirty years.



## Information on Ricoh's Inkjet heads

### Ricoh's inkjet capabilities

Ricoh is a major force in inkjet technology, having developed our own Piezo print heads, and has dedicated R&D laboratories in the EU and Japan to develop and improve these printing technologies.

Ricoh's inkjet capabilities are so well regarded that they have been used with partners in areas as diverse as Additive Manufacturing and textiles.

Ricoh also owns our AR latex and gel inks formula, which means that we can seamlessly integrate technology and consumables to optimise performance.



# Ricoh Pro TF6250

## SYSTEM SPECIFICATIONS

### GENERAL

Model name:	RICOH Pro TF6250		
Type:	True flatbed		
Print method:	UV Inkjet		
Head type:	RICOH Gen.5 MH54SERIES		
The number of inkjet heads:	12		
Resolution:	MAX: 635 x 1,800 dpi		
Ink type:	UV		
Ink:	CMYKW, Clear and Primer		
Ink Variation:	RICOH Pro UV ink T7210, GP120, DG130		
Ink Configuration:	Standard, Double White		
Curing method:	LED		
Ink bottle capacity:	CMYK and Clear	1 L for each	
	White	850 ml / 900 ml	
	Primer	1 L	
Ink tank capacity of Machine:	2.5 L		
Media:	Rigid materials : ACRYLIC, PETG, PC, PVC, GLASS, ALUMINIUM, STEEL, WOOD, MDF		
Max printing size (W x D):	2,500 x 1,300 mm		
Media	Max size	2,510 x 1,310 mm	
	Thickness	110 mm	
	Weight	45 kg/m <sup>2</sup>	
	Roll option	N/A	
Interface:	USB 3.0		
Colour Rips:	SAi PhotoPRINT DX		
Dimensions:	Width	4,812 mm	
	Depth	2,200 mm	
	Height	1,580 mm	
Weight:	Less than 1,500 kg		
Vacuum area:	Up to 4 sections		
Power Supply:	EMEA/Asia 20Amp 3-phase 4wire 380-415V		
	NA/JPN 30Amp 3-phase 4wire 200-240V		

### PRINT SPEED

Mode			RICOH Pro UV Ink Bottle T7210	RICOH Pro UV Ink Bottle GP120	RICOH Pro UV Ink Bottle DG130
Standard	4C	Draft	116 m <sup>2</sup> /h	116 m <sup>2</sup> /h	116 m <sup>2</sup> /h
		Production	64 m <sup>2</sup> /h	64 m <sup>2</sup> /h	64 m <sup>2</sup> /h
		Standard	48 m <sup>2</sup> /h	48 m <sup>2</sup> /h	48 m <sup>2</sup> /h
		Quality	32 m <sup>2</sup> /h	32 m <sup>2</sup> /h	32 m <sup>2</sup> /h
		High Quality	16 m <sup>2</sup> /h	16 m <sup>2</sup> /h	16 m <sup>2</sup> /h
	4C + W	Draft	-	-	-
		Production	30 m <sup>2</sup> /h	30 m <sup>2</sup> /h	30 m <sup>2</sup> /h
		Standard	15 m <sup>2</sup> /h	15 m <sup>2</sup> /h	15 m <sup>2</sup> /h
		Quality	10 m <sup>2</sup> /h	10 m <sup>2</sup> /h	10 m <sup>2</sup> /h
		High Quality	6 m <sup>2</sup> /h	6 m <sup>2</sup> /h	6 m <sup>2</sup> /h
Double White	4C	Draft	-	116 m <sup>2</sup> /h	116 m <sup>2</sup> /h
		Production	-	64 m <sup>2</sup> /h	64 m <sup>2</sup> /h
		Standard	-	48 m <sup>2</sup> /h	48 m <sup>2</sup> /h
		Quality	-	32 m <sup>2</sup> /h	32 m <sup>2</sup> /h
		High Quality	-	16 m <sup>2</sup> /h	16 m <sup>2</sup> /h
	4C + W	Draft	-	-	-
		Production	-	40 m <sup>2</sup> /h	40 m <sup>2</sup> /h
		Standard	-	20 m <sup>2</sup> /h	20 m <sup>2</sup> /h
		Quality	-	13 m <sup>2</sup> /h	13 m <sup>2</sup> /h
		High Quality	-	10 m <sup>2</sup> /h	10 m <sup>2</sup> /h

### PC SPECIFICATIONS - PRINT CONTROL SOFTWARE

Operating systems	Microsoft Windows 7 (Professional, Enterprise, Ultimate)
64 bit recommended	Microsoft Windows 8 (Pro, Enterprise)
	Microsoft Windows 10 (Pro, Enterprise)
	Microsoft Windows Server 2008 R2
	Microsoft Windows Server 2012
	Microsoft Windows Server 2016
	(Apple Mac OS X 10.5.2 or later with Parallels Desktop 4.0 or later for Mac)
Minimum hardware requirements:	CPU: Dual Core2GHz or later
	RAM: ≥ RAM 4GB
	Free disk space: 10GB
	HDD more than 500GB
	Display resolution: 1280 x 1024
Recommended for using one printer:	CPU: Intel i5/AMD Dual-Core 2GHz+
	RAM: ≥ 8GB
	Free disk space: 40GB
	Display resolution: 1280 x 1024
Recommended for using multiply printers:	CPU: Intel i7/AMD Ryzen 5/7 3GHz+
	RAM: ≥ 16GB
	Free disk space: 80GB SSD
	Display resolution: 1280 x 1024
Installation and operation:	USB port 1, DVD drive is required, LAN adapter, TCP/IP for network access required
Interfaces:	Parallel, Ethernet, TCP/IP, USB, Serial, FireWire, TWAIN

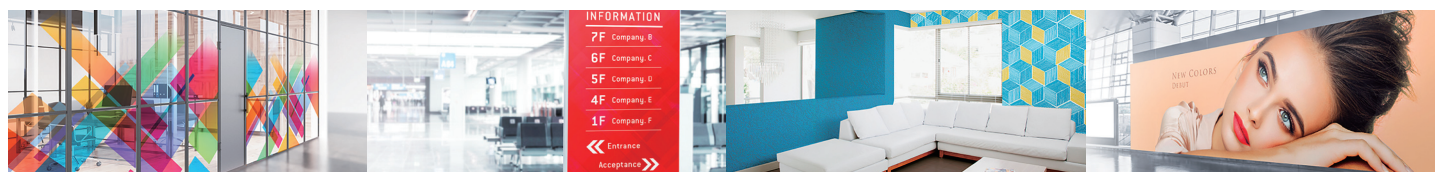


### RIP - AND PRINTING SOFTWARE

#### ColorGATE Productionserver (PS) (Professional and advanced colour management - in bundle with mainframe)

Features:	High-quality modular components
	Optimal color rendering
	Consistency of reproduction at any time
	Maximum productivity
	Intuitive control concept and user interface
	Utilizes the latest Adobe PDF print engine

- Product appearance and specifications may be changed without prior notice for improvement purposes.
- The actual colour of the product may vary from the pictures.
- Windows are either registered trademarks or trademarks of Microsoft Corp. in the United States and/or other countries.
- Intel are trademarks of Intel Corporation in the United States and/or other countries.
- Company and product names are trademarks or registered trademarks of their respective companies.
- Please contact your sales representative for details on performance, specifications, and restricting conditions, etc.



**RICOH**  
imagine. change.

www.ricoh-europe.com

The facts and figures shown in this brochure relate to specific business cases. Individual circumstances may produce different results. All company, brand, product and service names are the property of and are registered trademarks of their respective owners. Copyright © 2019 Ricoh Europe PLC. All rights reserved. This brochure, its contents and/or layout may not be modified and/or adapted, copied in part or in whole and/ or incorporated into other works without the prior written permission of Ricoh Europe PLC.